

CLINICAL TRANSLATION

A Clinical Research Nurse's Perspective

Catriona N. Grant BSN, RN

Clinical Research Nurse Manager

The Tearney Lab

Massachusetts General Hospital



MASSACHUSETTS
GENERAL HOSPITAL



THE
TEARNEY
LAB



HARVARD
MEDICAL SCHOOL





Disclosures

I have no actual or potential
conflict of interest in relation to
this program/presentation.

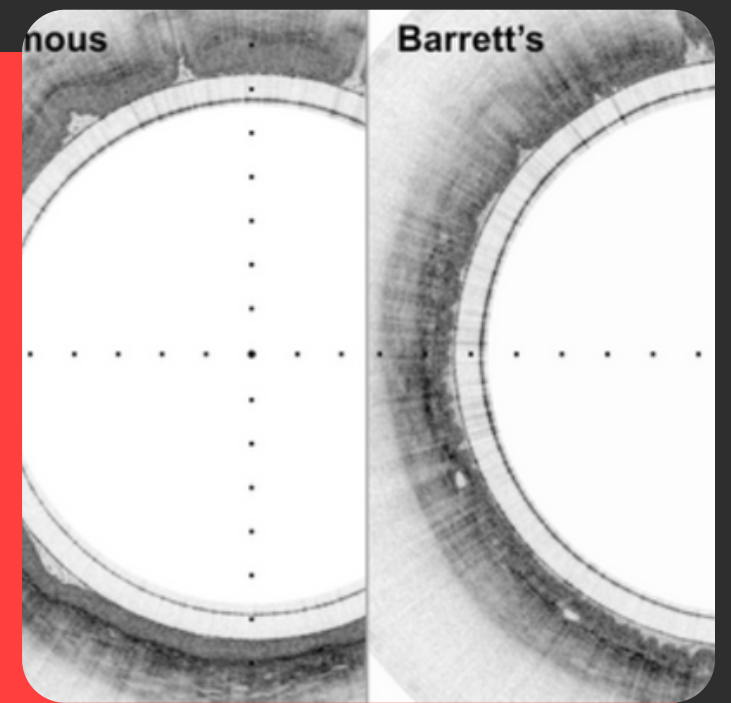



My Journey into Clinical Research

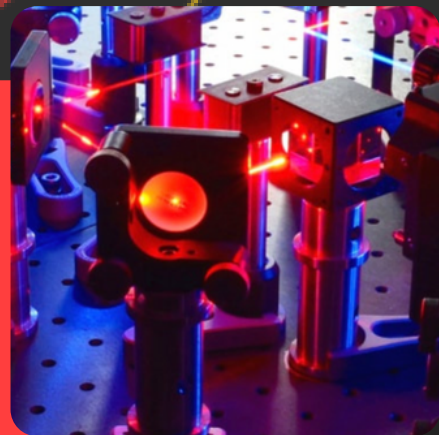


The Tearney Lab

Invents and translates noninvasive, high-resolution optical imaging modalities that enable disease diagnosis from living patients without removing tissues from the body.



NURD \neq  TCE OCT



The Tearney Lab

- Developed/refined filter
- What do i need to know/understand to help get this to clinic?
- What clinical input do we need?
- What are the implications for patient safety
- Risks? Benefits?

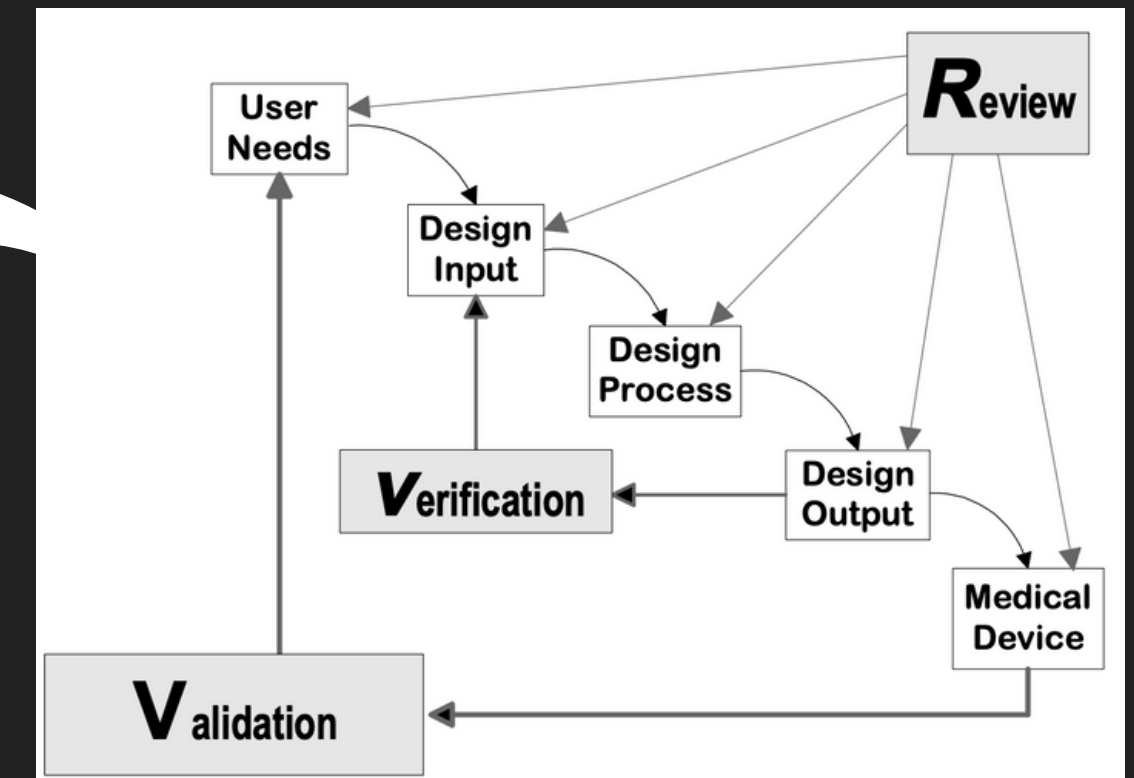


● Clinical Translation at The Tearney Lab **Design Control** ...

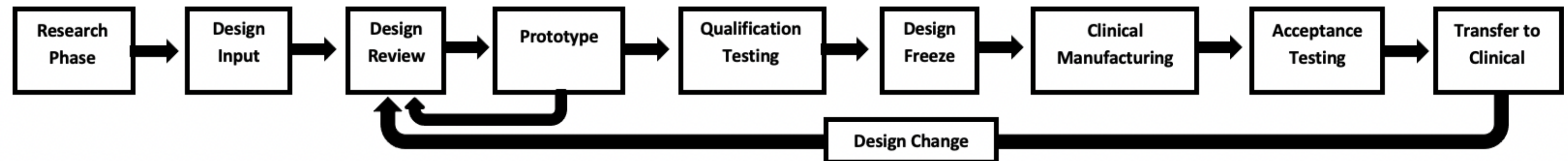
WHAT IS IT?

Practices and procedures to assure the device meets:

- User needs
- Intended uses
- Specified requirements



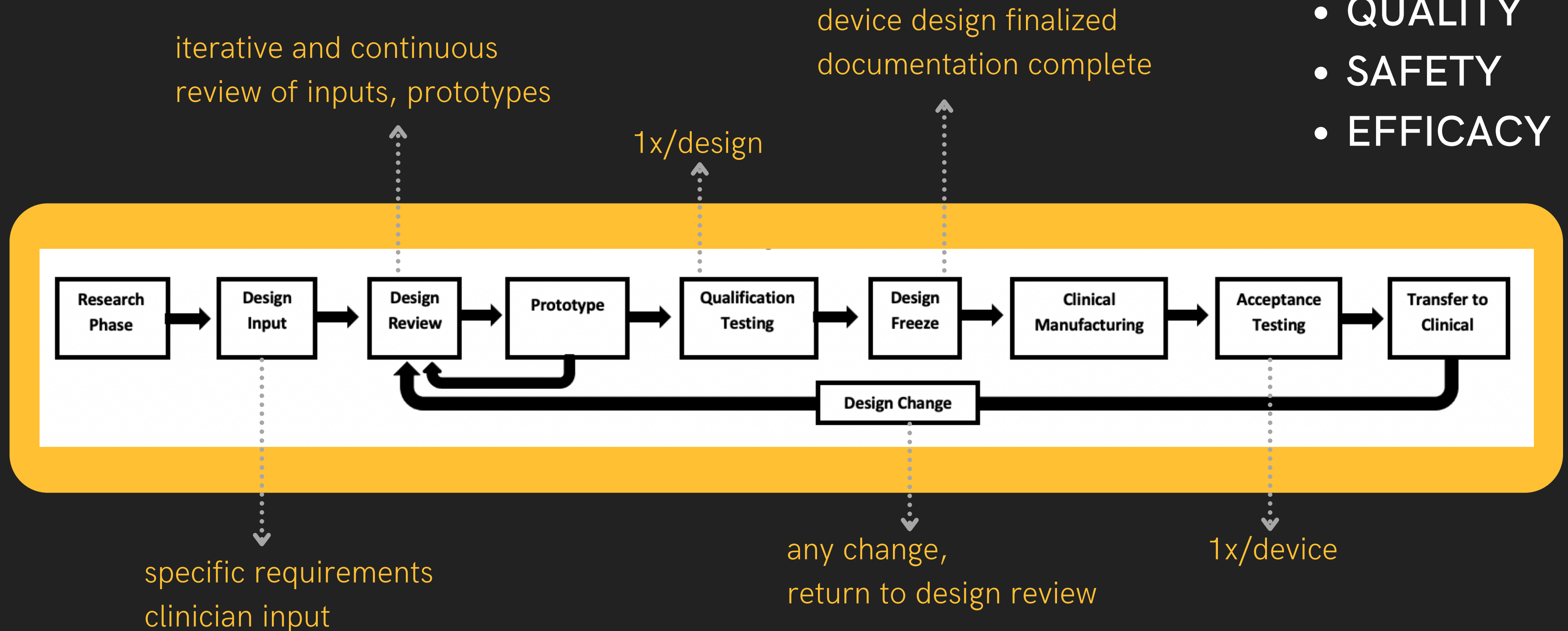
<https://www.fda.gov/media/116573/download>



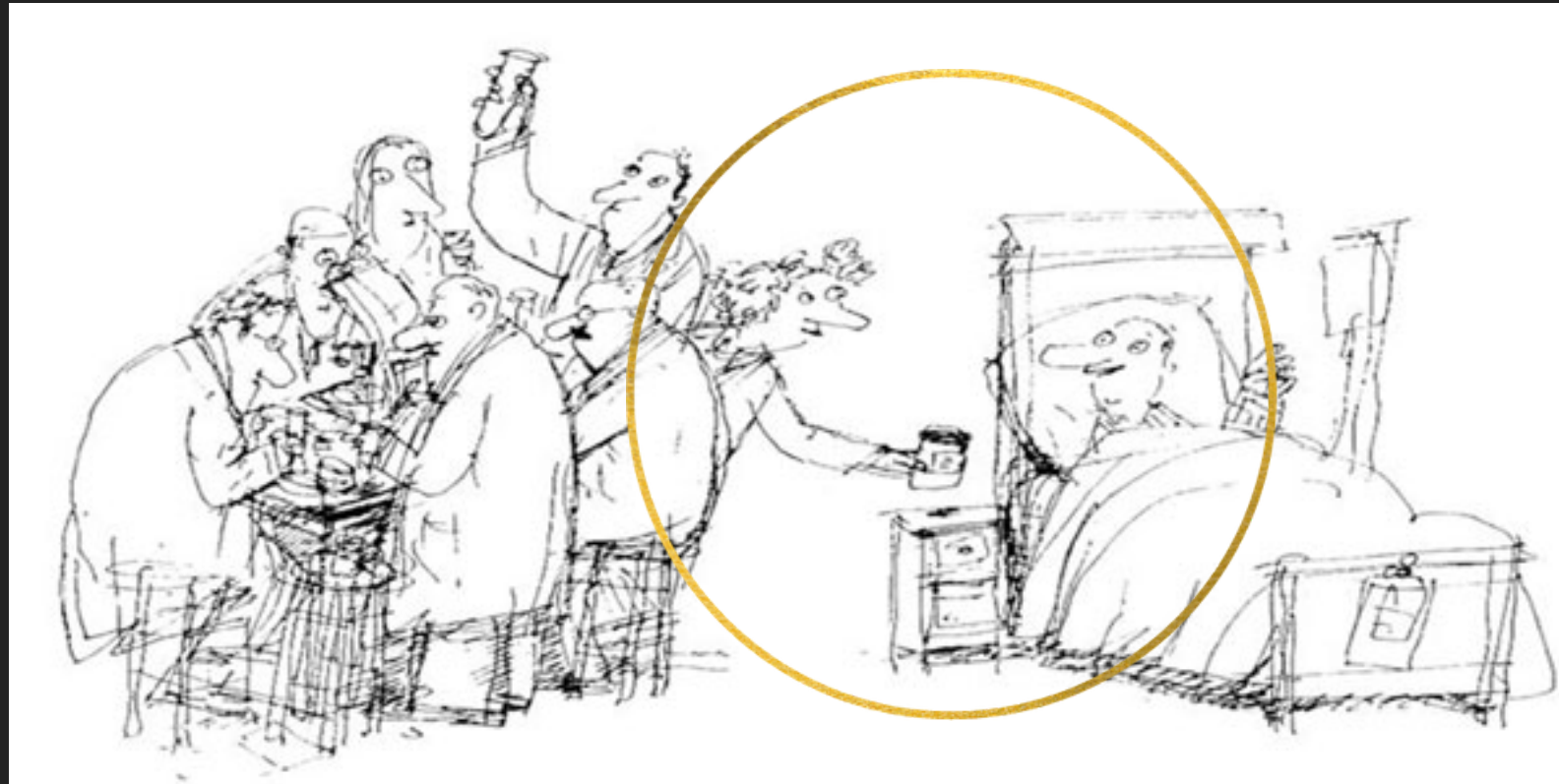
● Clinical Translation at The Tearney Lab **Design Control** ...

WHY?

- QUALITY
- SAFETY
- EFFICACY



● The Clinical Research Nurse's Role

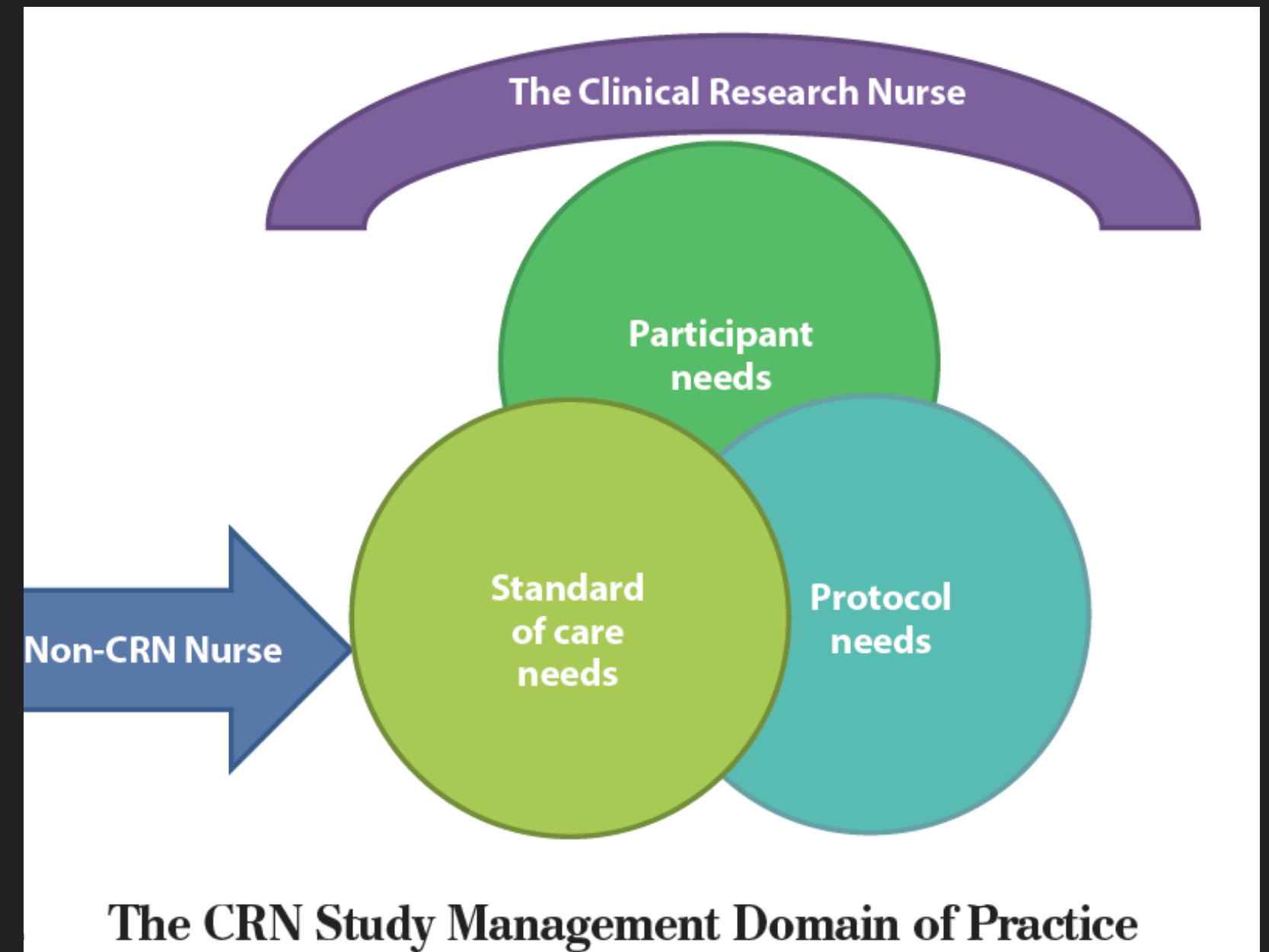


● The Clinical Research Nurse's Role



Domains of Clinical Research Nursing Practice

Source: Adapted from NIH (2009).



The CRN Study Management Domain of Practice

● The Clinical Research Nurse's Role



“SUCCESSES IN CLINICAL RESEARCH GREATLY DEPENDS ON EFFECTIVE COMMUNICATION WITH MEMBERS OF THE RESEARCH TEAM” (JONES, CROUDASS, & LEWIS, 2010, P. 23).

- Research translator
- Liaison between research and clinical care
- Educate research team on clinical perspective/logistics
- Fidelity to approved protocol
- Research participant advocate
- Facilitator of teamwork and communication

THANK YOU!

Questions?

Catriona N. Grant BSN, RN

CNAGRANT@MGH.HARVARD.EDU

WWW.TEARNEYLAB.ORG

